

Costa Adeje

Reference 108025



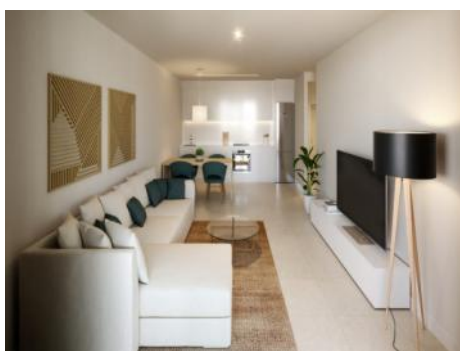

PORTA TENERIFE®
Your home. Our passion.

Nice two-bedroom apartment with spectacular views in El Madroñal, Costa Adeje

constructed area: 116 m²
bedrooms: 2
bathrooms: 2
balcony/terrace: ✓
sea view: ✓

swimming pool: ✓
energy certificate: in process

price: € 550,000.-



Costa Adeje

Reference 108025



Details:

Discover this exclusive, newly completed apartment in El Madroñal, one of the most sought-after areas of Costa Adeje.

With its elegant and modern design, light colors, and top-quality finishes, this home offers a bright and welcoming space. It features 2 bedrooms with built-in wardrobes, 2 bathrooms, and a spacious living-dining area with a fully equipped open-plan kitchen.

This apartment, with pre-installed air conditioning, stands out for its large 45m² terrace – the ideal place to enjoy the area's excellent climate and admire spectacular sunsets.

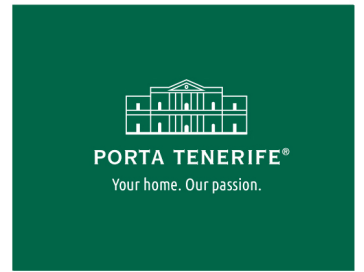
For added convenience, the property also includes an underground parking space and a storage room.

The newly built Atlantic Homes residential complex offers beautifully landscaped green areas and a year-round heated communal pool. Its unbeatable location places you just minutes from schools, shopping centres, restaurants, bars, golf courses, and the finest beaches in southern Tenerife.

A unique opportunity for those seeking an exceptional quality of life in an exclusive setting. Don't miss it out and contact us for more information.

Costa Adeje

Reference 108025



Location & surrounding area:

Adeje includes numerous popular settlements on the southwest coast of Tenerife, which are known in their entirety and together with the local coastline as Costa Adeje. Under the protection of the volcano Teide, which opposes the trade winds mostly coming from the northeast, the climate is very sunny and the sunsets are even more impressive with the neighbouring island of La Gomera in the background.

On this coast, there are many beaches with the best opportunities for swimming or water sports, from Playa del Duque, Playa de Fañabe, Playa de Torviscas, Playa del Bobo, Playa de las Cuevitas and Playa de Troya up to Playa de las Américas. The marina of Puerto Colón is also a starting point for trips to whale watching, the cliffs of Los Gigantes (max. height 638 meters) and Masca Gorge. Not far from the beaches nestled harmoniously into the landscape, is the 27-hole golf course Golf Costa Adeje, on which to the viewer admires - directly adjacent to the green of the course - the deep blue sea with La Gomera in the background.

The Costa Adeje has excellent infrastructure, various shops, restaurants and a lot of special attractions like the Aqualand and Siam Park. This will benefit owners of the many apartments, houses and villas in the region, but also the community Adeje, which presents itself in bright colours with its beautiful old church, town hall, elegant Canarian wooden balconies and around his cozy Plaza. Other cultural attractions invite you to a contemplative walk through Adeje, such as the cultural center or the large statues of Beethoven and the Guanche-King "El Gran Tinerfe".

Costa Adeje
Reference 108025



Balcony



Living area



Dining area



Bedroom



Views



Floor

All information is correct to the best of our knowledge. Errors and prior sale excepted. This prospectus is purely for information purposes. Only the notarized deed of sale is legally binding.

Costa Adeje

Reference 108025



Community area



Floor



Front



Community area



AH_P2_1J_page-0001

All information is correct to the best of our knowledge. Errors and prior sale excepted. This prospectus is purely for information purposes. Only the notarized deed of sale is legally binding.